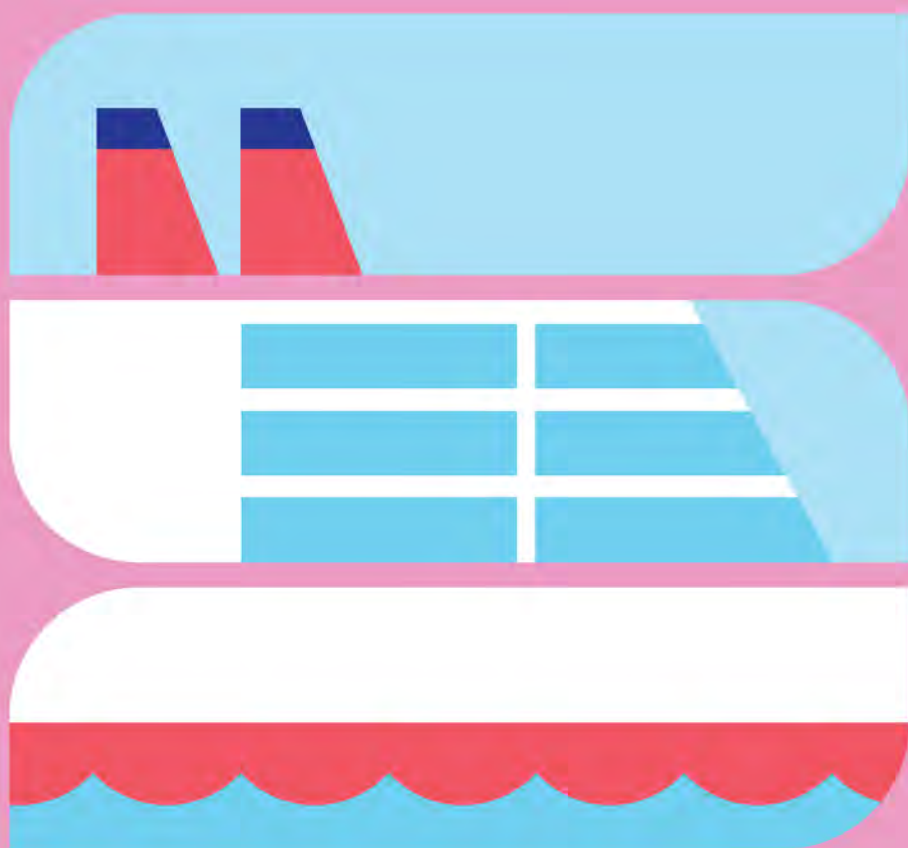


**Let Seattle
Southside
float your
boat.**



A curiously wonderful invitation

You deserve an extended vacation, don't you think? Keep it stress-free when you travel a day or two before your cruise, or stay a few days after in curiously wonderful Seattle Southside. Explore your curious side with a microadventure or two (or three), and make a great trip even better.

The easy choice for smooth sailing

Seattle Southside is a place like no other with a boat-load of unique experiences, but if an amazingly good time is a hard sell for you, it's also:

- **Incredibly convenient and accessible.**
- **15 minutes south of Seattle and 20 minutes north of Tacoma.**
- **Easy access to Sea-Tac International Airport, Light Rail, and Tukwila Amtrak Station.**
- **Offers tons of affordable stays with free breakfast and complimentary airport shuttles.**

Seattle Southside is the perfect place to rest your anchor as you explore Western Washington.



Where the curious stay.

You may have heard of a little place called Seattle. We're pretty close to it, like 15 minutes South of Downtown Seattle close. We're made up of Tukwila, SeaTac and Des Moines, a nice trio of cities if we say so ourselves. Seattle may have popular attractions like the Space Needle and Pike Place Market, and that's cool, but here in Seattle Southside we're all about the curiously wonderful. Whether you have a thing for racy fish statues, UFOs, or the marvel of flight, you're sure to discover things you can't see anywhere else.



A guide to good days.

Here's a sample of what fun-filled days in Seattle Southside could look like. Looking to kick back, kick it into high gear, or just kick it with friends and family, we have it all. Mix and match activities and curate your own pre- or post-cruise adventure or visit SeattleSouthside.com for even more ideas.

Pre-cruise



Book a tour: Whether you're looking to shop, discover new food at a local restaurant or have an appetite for outdoor adventure, there's something for you here. Whatever you're into, there's an exciting tour option ready to point in the direction of a good time.



Sightsee the Space Needle and Pike Place Market, or check out the filming locations of Twin Peaks, or the majesty of Mount Rainier National Park. Be sure to take the light rail into the city for a uniquely Seattle Southside ride.



Smell the roses at the Highline SeaTac Botanical Garden or take a stroll through the beautiful sensory gardens and find your inner Zen in the historic Seike Japanese Garden.



Taste and see how chocolate bars are made at the Seattle Chocolate Experience Chocolate factory tour. Get a bird's-eye view of the chocolate making process, learn about Seattle Chocolate's sustainable sourcing of cacao beans, and of course, sample a variety of delicious flavors. Take some along for your cruise.



Wine and dine when you check out Sharp's Roasthouse for some delicious BBQ, an over-the-top drink selection at the bar, and friendly servers. The savory prime rib and ice cold raspberry balsamic cocktail will send you off to Alaska with a smile on your face.



Pick it up before you head out:

Stop by Westfield Southcenter mall for last minute travel needs and see what the big deal is all about at the largest mall in Washington. Find the best of everything you're looking for and take home locally made goodies too.

A guide to good days, continued.

Post-cruise



Your ship has come in so take advantage of the Port of Seattle's Port Valet program to do more sightseeing. They'll take your bags and bring them directly to your plane, so you don't have to haul them around the city streets.



Be in no rush to leave; spend a night or two by the airport, finish your bucket list sightseeing and relax before your travels.



Dine luxuriously when you share a meal at Copperleaf Restaurant & Bar. This award-winning fresh farm-to-table experience specializes in Pacific Northwest cuisine daily. You're sure to leave satisfied and a little stuffed.



Stay in high spirits and enjoy the wonder of aviation with a visit to The Museum of Flight. The 15-acre campus features over 175 air and spacecraft, 3D aviation and space movies, and dozens of fun, interactive exhibits and family activities.



Be a good sport. Cheer on the two-time Major League Rugby champs, Seattle Seawolves at Starfire Sports or ride the light rail to root for the Mariners. Be sure to pick up a souvenir jersey.



Hungry for more? Uncover Burien, a paradise of international cuisine and culture. Try Burien Fish house, offering delicious fish & chips, fish tacos and more. Or grab a bite at Marlaina's Mediterranean kitchen serving up tasty Mediterranean classics. Take your taste buds on a world tour.

Start planning your Seattle Southside trip.

If you're looking to find culture and history the **Seattle Southside Scenes Trail** is your guide to historic landmarks and public art. While you're at it take advantage of the **Seattle Southside Savings Pass** for discounts and savings. Use the QR code for details.



Get a deal with it.

Sign up for your **Seattle Southside Savings Pass** and get onboard with discounts on restaurants, stays, activities and more.