



# Explore Seattle Southside



# 2026

Official Media Kit

The curiously wonderful  
destination for exploring  
the Pacific Northwest

# Welcome to Seattle Southside!

Located just 12 miles south of downtown Seattle, Seattle Southside—including SeaTac, Des Moines, and Tukwila—offers journalists easy access to a curiously wonderful destination filled with story-worthy microadventures, global flavors, distinctive local businesses, and year-round experiences.

Recent media coverage has highlighted everything from wellness and global eats to family-run businesses, local artists, and quirky discoveries, reflecting the breadth of editorial opportunities across the region.

In 2025, Seattle Southside welcomed 1.8 million visitors who generated more than \$985 million in travel spending, underscoring the destination's growing appeal and economic impact.

We welcome travelers from around the world to discover our hidden gems, unique attractions, family-friendly vibe, and curiously wonderful microadventures—and we're here to help media bring those stories to life through interviews, hosted tours, photography, video, and destination information.

We're excited to welcome you to explore Seattle Southside!



Explore Seattle Southside  
Communications Team  
**Ashley Comar, Senior Vice President**



# Random but Memorable Facts

Here's a lightning round of fast-facts and figures to supplement and enhance any story worth telling

## The Facts

**12 miles** south of downtown Seattle

**18 miles** north of downtown Tacoma

**3** light rail stations to downtown Seattle

**Best airport** in the country 2 years running

**100+** full-service restaurants

**60+** hotels with nearly 10,000 rooms

## Did you Know?

The first documented **pickleball tournament** was in 1976 in Tukwila.

**One of the most diverse school districts** with over 80 languages spoken.

**Men in Black** were first documented in Des Moines after a UFO sighting weeks before Roswell.

**Super Mario** was named after a local developer who leased Nintendo a Tukwila warehouse.

A former **secret missile launch site** is now a gorgeous park in SeaTac.

Des Moines is the **Sixgill Shark** Capital of the World.



iFLY Indoor Skydiving



Zenith Holland Nursery



Oppegaard Meadery



Seattle Seawolves



d'Aigle Autoharps



K1 Speed



BMX SeaTac



Family Fun Center



Big Catch Statue



The Roadhouse



Saltwater State Park

# Seattle Southside Cities DES MOINES

Des Moines is known as the Boating Capital of the Pacific Northwest. This seaside city boasts miles of shoreline, a walkable marina district, and a quaint small-town feel. It has all the charm of the Seattle waterfront, without the crowds.



Des Moines Beach Park



Des Moines Creek Trail

If beaches, parks, and fresh seafood are on your list, Des Moines, Washington is a must-visit in Seattle Southside. Located just south of the airport, it offers views of the Olympic Mountains, a walkable marina district, and easy access to both Seattle and Tacoma.

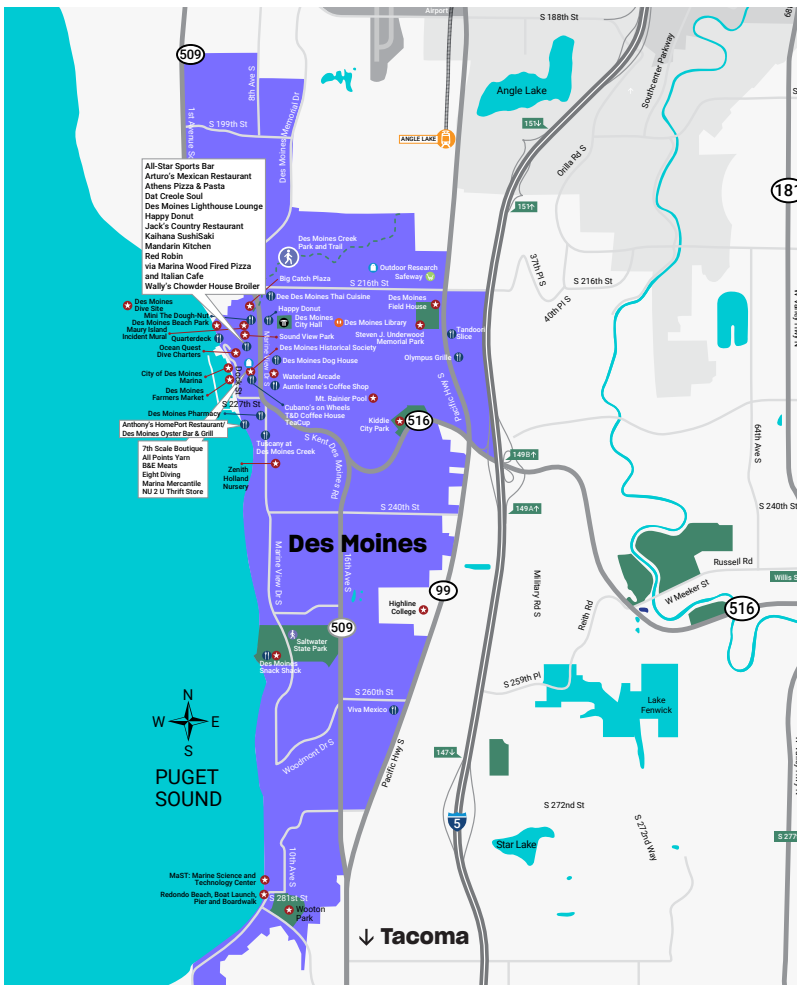
From sunset strolls along the Des Moines Pier to paddleboarding, trail walking, beachcombing, and diving, the city is ideal for outdoor enthusiasts. Visitors can explore six miles of shoreline, public beaches, waterfront parks, fishing piers, and a lively boardwalk, or bring their boat to the 900-slip, full-service marina with transient moorage and fuel services. During summer, the waterfront comes alive with a weekly farmer’s market and frequent outdoor concerts.

Des Moines is also dubbed the “Sigil Shark Capital,” believed to be a nursery for these gentle prehistoric creatures, making it a uniquely memorable destination for scuba diving.

History

Located along the eastern shore of Puget Sound, Des Moines was originally homesteaded by settlers from Des Moines, Iowa. Its scenic vistas, quiet hillsides, and shoreline made it a popular recreational destination in the early 1900s, with food, leisure, and even bootlegging shaping its early identity.

Following growth during and after World War II, Des Moines was officially incorporated in 1959, leading to the development of the marina and pier that remain central to the city’s identity today.



Des Moines Beach Park



# Seattle Southside Cities TUKWILA

Tukwila is a global dining and retail hub, with the region's largest shopping center and hundreds of shops and restaurants.



Foster Golf Links



Interurban Trail

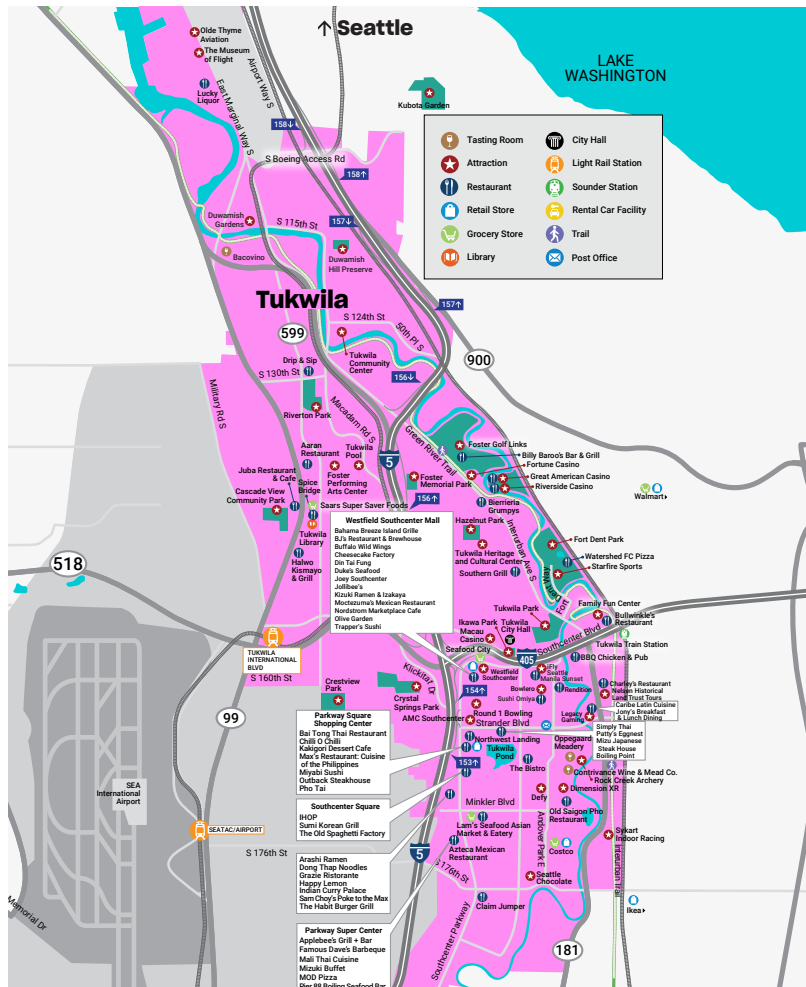
Just minutes from Seattle-Tacoma International Airport (SEA), Tukwila offers a concentrated mix of retail, recreation, and cultural experiences, making it a convenient base or stop for visitors to the Seattle region. As one of the most culturally diverse regions in the country, its many communities are reflected in the array of global cuisine and stores.

The city is home to Westfield Southcenter, the largest shopping center in Washington, featuring a wide range of national retailers, local shops, and buzzy restaurants. Nearby, adventure seekers can try indoor skydiving at iFLY Seattle, while outdoor enthusiasts have access to the Green River and Duwamish River Trails for walking, biking, and wildlife viewing. The Museum of Flight, one of the largest air and space museums in the world, offers extensive exhibits highlighting the region's aerospace legacy. Tukwila is also home to the Seattle Seawolves, a Major League Rugby team that plays at Starfire Stadium.

**History**

Tukwila's story begins along the Black and Duwamish Rivers, where the Duwamish people lived off the land and waterways for generations. The name "Tukwila" comes from a Salish word referencing the hazelnut trees that once flourished in the area.

In 1853, settler Joseph Foster (later known as the "Father of Tukwila") arrived from Wisconsin and established one of the area's earliest homesteads on land that is now home to Foster Golf Links, one of the oldest public golf courses in the region. What began as an agricultural settlement gradually evolved alongside the growth of railroads and air travel. Tukwila was incorporated in 1908 and has since grown into a thriving retail hub.





# Seattle Southside Cities SEATAC

SeaTac is the gateway to the Pacific Northwest, welcoming millions of travelers each year. But this diverse city offers far more than an airport. Visitors enjoy exploring the global dining scene, catching live music, and finding bursts of nature at parks and gardens.



Puget Sound



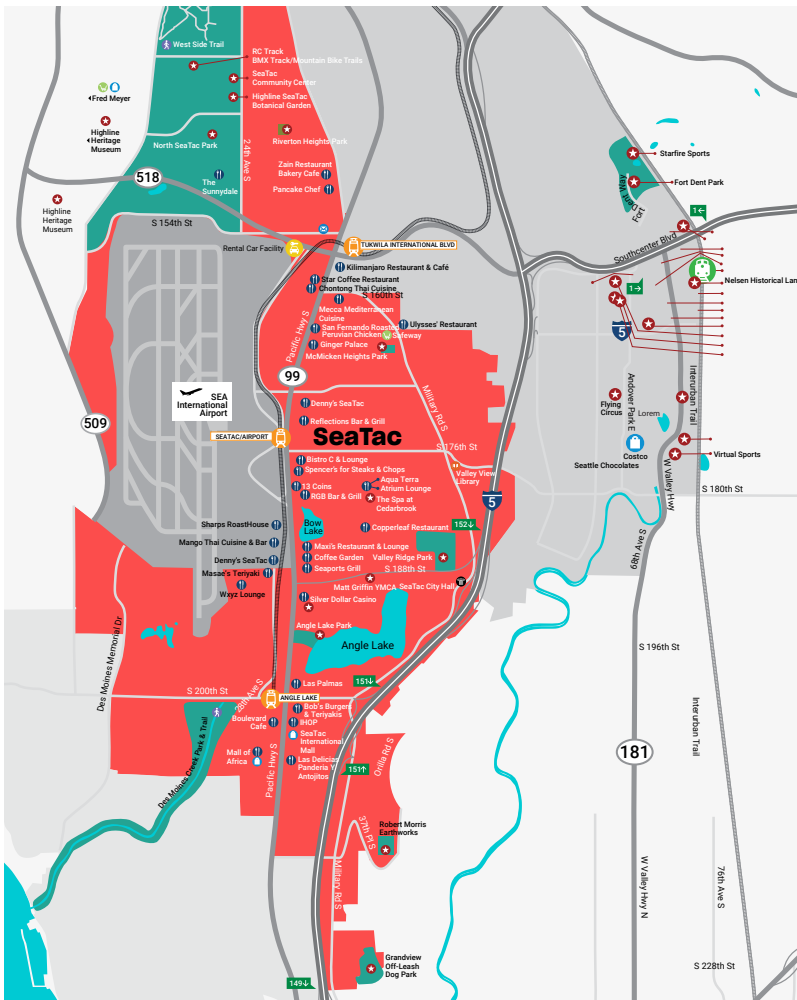
Angle Lake Park

If you land at Seattle-Tacoma International Airport (SEA), you're already in the heart of Seattle Southside's hospitality hub. The City of SeaTac is a vibrant, multicultural community where visitors can explore the World Table District, a stretch of more than 30 locally owned restaurants, cafés, and markets showcasing a wide range of global cuisines. Alongside lakeside scenery and family-friendly parks, the city offers a welcoming introduction to the region.

SeaTac is also home to dozens of hotels and has one of the largest concentrations of rental cars in Washington, making it a natural base for exploring the region. With nearly 1,000 businesses, including approximately 80 Fortune 1000 companies, SeaTac plays a central role in the area's economy. Alaska Air Group and Horizon Air are headquartered here, and nearby attractions, parks, and dining options, including the World Table District, give visitors reasons to stay and explore.

History

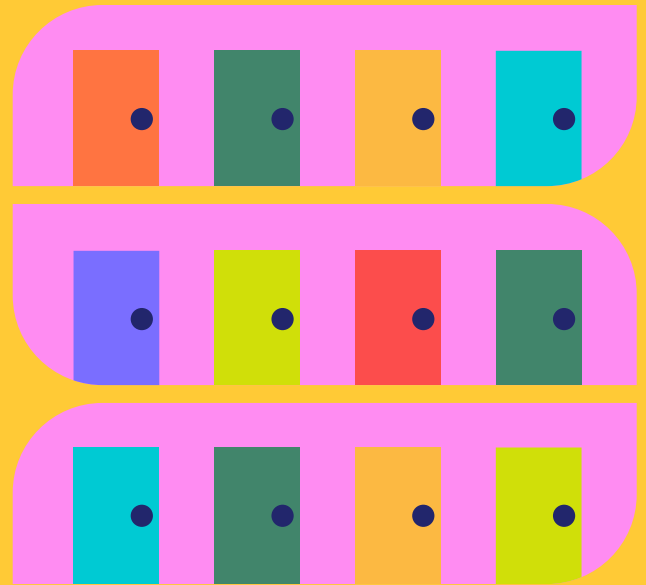
SeaTac's story is closely tied to its geography. Located along the Highline Ridge between Puget Sound and the Green and Duwamish River valleys, the area was originally home to the Muckleshoot and Duwamish peoples. As settlers arrived in the mid-1800s, transportation routes such as Military Road, Des Moines Memorial Way, and Highway 99 (now International Boulevard) became key connectors through the region. The opening of Seattle-Tacoma International Airport transformed the area into a major aviation gateway, driving rapid growth and development. In 1990, nearby communities voted to incorporate as the City of SeaTac, taking its name from the airport that brings millions of people through its borders each year.



Grandview Dog Park

# Lodging

From comfortable economy to resort-style oasis—there are over **9,000 hotel rooms** in Seattle Southside—the majority of which cost 20-30% less than comparable rooms in downtown Seattle, and offer easy access to SEA Airport, restaurants, major retailers and, outdoor recreation. Guests also enjoy services such as free shuttles to and from the airport, to and from Westfield Southcenter Mall, and Sounder Train or Light Rail.



## A few notable properties?

**Cedarbrook Lodge** in SeaTac stands out as a hidden gem. One of Forbes' best hotel airports, Cedarbrook is nestled amidst 18 acres of lush gardens and serene landscapes. This retreat-like property provides a tranquil escape with farm-to-table dining, spa services, and complimentary ice cream. Cedarbrook Lodge combines comfort and luxury in a seamless blend.

For contemporary elegance with a touch of urban flair, **Hotel Interurban** in Tukwila is a prime choice. Located just minutes away from major attractions and corporate headquarters, this stylish property boasts sleek design, modern amenities, and great views of the cityscape. Guests can dine at Rendition, a restaurant and bar featuring Northwest-inspired fare.

**DoubleTree by Hilton Hotel Seattle Airport** offers the perfect balance between convenience and comfort. Just moments from SEA Airport, this renowned hotel caters to both business and leisure travelers. With its spacious rooms, exceptional dining options, and an array of amenities, including a fitness center and heated outdoor pool, this unique property is set alongside Bow Lake and offers exceptional views.

Located a short drive from the Des Moines waterfront, **Four Points by Sheraton Seattle Airport** South offers rooms with a view of the surrounding area, including floor-to-ceiling windows framing the Olympic Mountains. Modern design makes the spacious rooms feel even more relaxing, while the large lobby and on-site restaurant provide a peaceful place to relax and refuel.



**Cedarbrook Lodge**



**Interurban**



**DoubleTree**



**Four Points**

# Shopping

Tukwila, with its impressive expanse of **more than 5 million square feet of shopping**, is a haven for both seasoned shoppers and treasure hunters alike. The city offers an eclectic mix of options—ranging from locally owned shops brimming with unique finds to renowned designer brands found at the Pacific Northwest’s largest shopping center.



**Westfield Southcenter**, a shopping destination in its own right, boasts over 225 retailers that cater to diverse tastes and preferences. But it’s not just about the shopping experience; visitors can indulge in full-service dining, catch the latest blockbuster at the AMC IMAX theater, or even enjoy a round of bowling. With so much to explore, Westfield Southcenter and its surrounding area represent what a one-stop shopping destination can truly be.

Just a few miles to the southeast, lovers of Scandinavian minimalism, delicious meatballs, and unpronounceable product names flock to IKEA, it’s more than just a furniture store; it’s an experience in itself.

For those with a penchant for boutique experiences, downtown Des Moines beckons with its picturesque shoreline stretching across six miles. This charming marina district offers not only waterfront views of Puget Sound but a delightful array of local shops. Here, visitors can wander through hand-curated boutiques brimming

with specialty jewelry, artisan wares, and unique gifts. And for wine enthusiasts, there’s the added bonus of wine tasting opportunities, allowing them to savor the flavors. From one-of-a-kind treasures to handcrafted delights, the downtown Des Moines Marina District promises a relaxed shopping experience in a captivating coastal setting.

As one of the most diverse areas in the country, Seattle Southside home to dozens of **stores and international markets** where you can find imported products and immerse yourself in the sights and smells of another culture. Try a novel snack, pick up ingredients to recreate a dish you love, and browse clothing and home goods.

There’s something about shopping at thrift stores that taps into a sense of adventure and Seattle Southside offers a wide range from large stores, to specialty and boutique shops.



Westfield Southcenter



IKEA



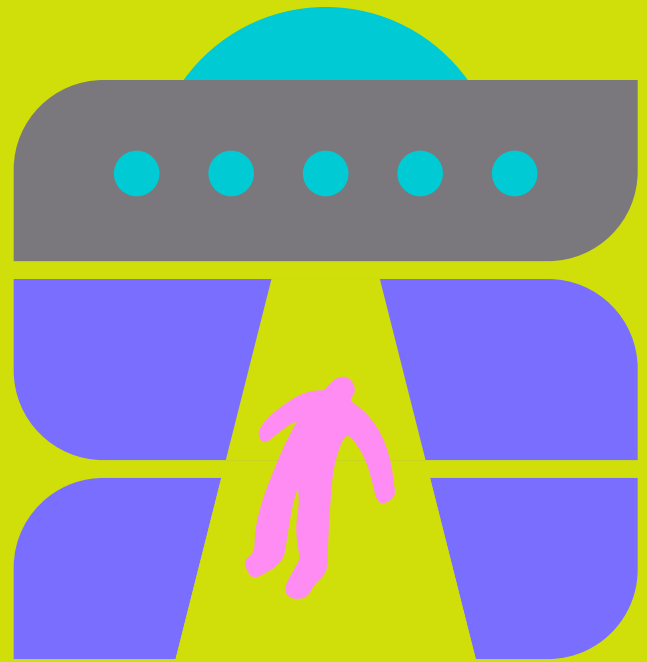
Seattle Chocolate Factory



SeaTac International Market

# Activities & Attractions

Seattle Southside offers an unexpectedly wide range of things to do. From toddlers to teenagers and the young-at-heart, there are activities for every occasion and season.



## Thrill Seeking

Indoor skydiving and skiing and high-speed go-karts pump up the adrenaline.

## Gaming & Arcades

Escape rooms, retro arcades, games show, and virtual reality experiences kick up the excitement.

## Sports Lovers

Seattle Southside is a soccer hub. If you need more check out golf, BMX racing, or professional rugby.

## Kids Paradise

Trampoline parks, miniature golf, bumper cars, jungle gyms help keep kids active and entertained.

## Bowling Capital of the Northwest

With more than 70 lanes, Seattle Southside helps you bring home the turkeys.

## Makers Unite

Learn how to plant succulents, knit, carve wood, make crafts or decorate food in a class.

## Chocolate + Mead

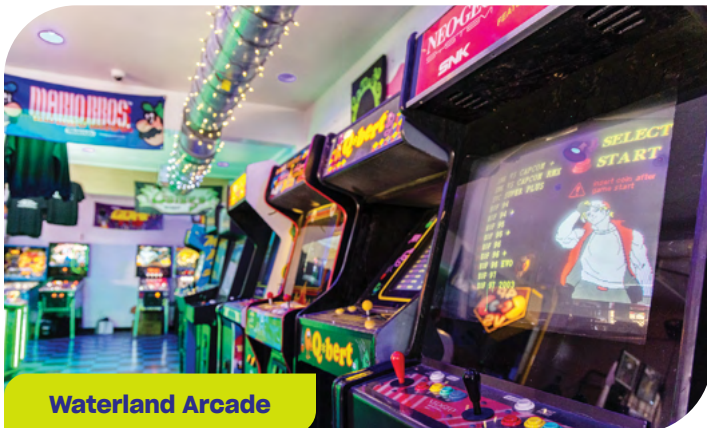
Tour a working chocolate factory and fill up on samples, then head to a meadery and sample honey wine.

## Unique Conventions

Miniatures, astrology, horror, fantasy and science fiction fans all come together in Seattle Southside to celebrate their shared interests.

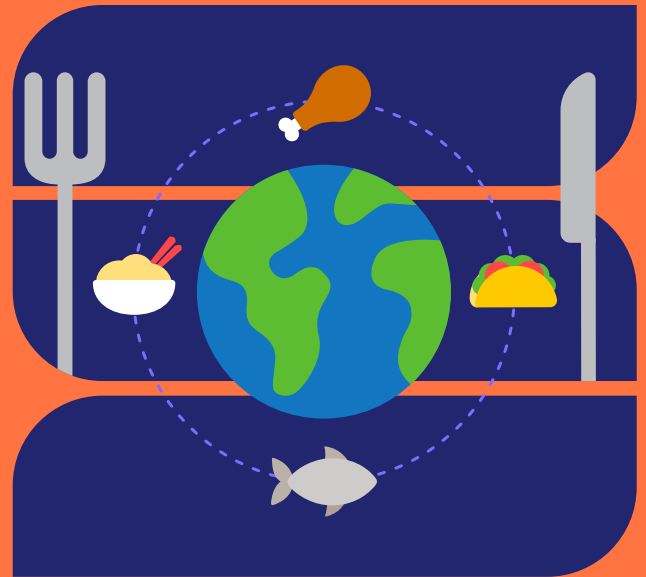
## Aviation Hub

Plane assembly, plane spotting, plane history and planes land and take off all right here.



# Dining & Nightlife

From casual to upscale, family-friendly to intimate, Seattle Southside offers dining options for everyone with more than intimate Seattle Southside offers dining options for everyone with well over **300 restaurants, cafes, bakeries, and bars**. The area's cultural diversity is reflected in the vast variety of dining selections. Dishes from Africa, Asia, South America, Mexico and beyond will fill your cravings.



## Copperleaf Restaurant

Farm-to-table delights where culinary excellence meets warm ambiance.

## Anthony's HomePort & Lower Deck

Coastal bliss offering fresh seafood and stunning views.

## Sumi Korean Grill

A sizzling sensation, a grill-your-own Korean BBQ adventure.

## Miyabi Sushi

The best sushi in the PNW, according to *The Seattle Times*.

## Arashi Ramen

Satisfy cravings with some of the area's most sought-after noodles.

## 13 Coins

Since 1967, this stylish, retro restaurant has been known for its steaks, seafood, and all-day breakfast.

## Pizza Time

A longtime local favorite known for its prompt delivery, specialty pizzas and wings.

## WORLD TABLE DISTRICT SEATAC CITY

A stretch of locally owned restaurants, cafes, and markets in SeaTac takes you on a tour of global flavors.

### Sharps RoastHouse

Savory roasts and craft cocktails.

### Star Coffee

Flavorful, authentic Ethiopian dishes.

### Pancake Chef

A nostalgic diner serving fluffy stacks of joy.

### Zain Restaurant & Bakery Cafe

Traditional Somali dishes, fresh pastries, and more.

### Urban Tapri

Indian street food and a famous UFO Burger.



Sharps RoastHouse



Pancake Chef

# Arts & Culutre

Seattle Southside boasts a **vibrant arts and culture scene**, enticing visitors with a rich tapestry of experiences. Explore local art, artisan crafts, and rich heritage. From the allure of aviation history to the soulful melodies of a symphony, the region offers a diverse and enriching cultural journey for all to revel in.



## Farmers Markets

Embrace the artistic ambiance while exploring artisan crafts and local art.

## Des Moines Art Walk

Admire sculptures and murals by talented local artists.

## Local Parks & Outdoor Spaces

Attend community events, concerts, and shows all around the area.

## The Roadhouse

Catch free performances and community events at this venue where music, culture, and local talent take center stage.

## The Museum of Flight

Immerse yourself in the fascinating world of aviation history and innovation at the largest private aerospace museum in the world.

## UFO Mysteries Trail

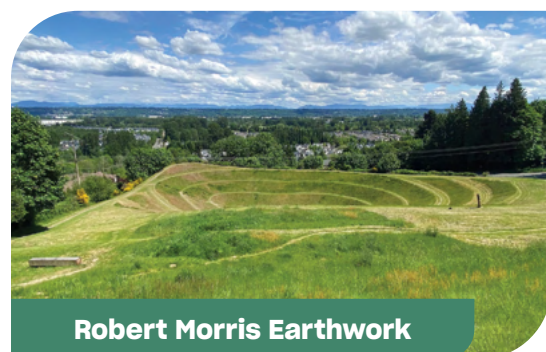
Follow a mobile trail through key sites connected to the 1947 Maury Island Incident, one of the first reported UFO cases investigated by the U.S.

## Highline Heritage Museum

Discover engaging exhibits on local history, art, and unforgettable legends.

## Robert Morris Earthwork

Experience the Robert Morris Earthwork, a striking land-art installation that transformed an industrial site into a landmark for art, history, and reflection.



# Meetings & Events

Boasting more than **650,000 square feet** of meeting and event space and **9,000 hotel rooms**, Seattle Southside encompasses the second largest grouping of hotels in Washington State.



Ideal for meetings, Seattle Southside is conveniently located between Seattle and Tacoma, at the crossroads of I-5 and I-405, and near the airport. Attendees enjoy amenities like complimentary airport shuttles and free breakfasts, lessening their overall costs.

Featuring both traditional and non-traditional meeting facilities, we can customize an experience including site visits for planners and team building activities for attendees.

Our destination experts will help at every step. We make planning easy with complimentary services to ensure every event is the talk of the town(s).

## Business Development Scholarship Program

The Business Development Scholarship is available to support our Partners' sales efforts by providing the opportunity to connect directly with meeting planners.

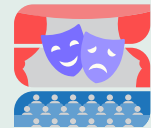
### Unconventional Spaces



**Museum of Flight**



**Beach Park Event Center**

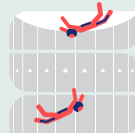


**Fosters Performing Art Center**



**The Museum of Flight**

### Team Building



**Indoor Skydiving**



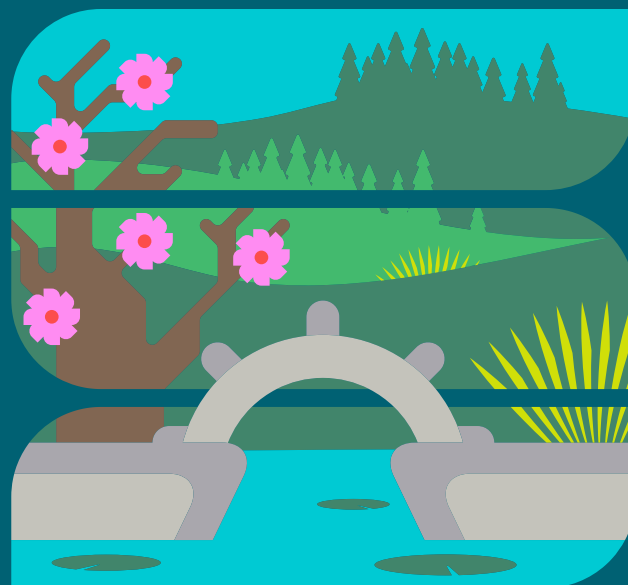
**Seawolves Rugby Scrimmage**



**Seattle Chocolate Factory**

# Outdoor Recreation

Discover nature's wonders in Seattle Southside, offering **diverse recreational venues** like botanical gardens, lakeside parks, and scenic beaches. Sports enthusiasts can kayak on tranquil waters, scuba dive in marine sanctuaries, BMX race on challenging tracks, golf, hike, bike, and more.



## **Highline SeaTac Botanical Garden and Seike Japanese Garden**

A tranquil escape with lush gardens and serene Japanese aesthetics.

## **Angle Lake Park**

A sandy beach, spray park, fishing pier, and views of Mount Rainier—all in one place.

## **Redondo Beach Boardwalk**

Stroll along Puget Sound, admire the views, and embrace the beachfront charm.

## **Des Moines Marina and Beach Park**

Coastal delight, sandy shores, and water activities at your fingertips.

## **Des Moines Creek Park Trail**

Explore nature's beauty along this scenic hiking trail. Duwamish-Green River Trail: A 19-mile cycling journey through breathtaking landscapes.

## **Saltwater State Park**

Adventure in nature, hiking, tidepooling, and beachcombing.

## **North SeaTac Park**

Ample green spaces, playgrounds, sports, BMX racing, an RC Track, Frisbee golf course, and picnics for all.

## **Grandview Dog Park**

Some of the region's best vistas—perfect for picnics, play, and enjoying the outdoors.

## **Duwamish Hill Preserve**

Trails steeped in history and the rich heritage of the native people.

## **Interurban and Green River Trails**

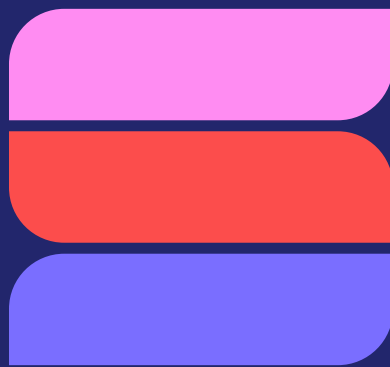
Walk, run or bike on paved trails through multiple cities.



Highline SeaTac Botanical Garden



Redondo Beach Boardwalk



**Stay curiously  
wonderful**